



TAMATEA
HIGH SCHOOL

**Ngā Pitopito
Kōrero**



E tipu e rea, ka tipu koe hei tangata—Growing good people for a changing world

Te Whakaputanga — Paenga-Whāwhā/April 2025

Paenga-Whāwhā/April

Paraire/Friday 4th

Cultural Night, 5pm-7pm.

Mane/Monday 7th

Macfitness

Drama Club visit to Theatre

Turei/Tuesday 8th

ANZAC Commemoration

Macfitness Hikoi

Paraire/Friday 11th

Final assembly period 5

End of Term 1

Mane/Monday 28th

Start of Term 2

Haratua/May

Tāite/Thursday 1st

Fraser Music/Performing Arts

Wenerei 7th– Paraire/Friday

9th

BP Business—all Year 11 students

Paraire/Friday 9th

HB Chess Championships

Mane/Monday 12th

Teacher Only Day

2025

**Tamatea High School
50th Anniversary Reunion
Friday 24th—Sunday 26th
October
(Hawke's Bay
Anniversary/Labour
weekend)**

Spirit of Adventure—Year 10

Ten Year 10 students were able to go on a five day Spirit of Adventure trip. They sailed from Auckland, with the trip featuring early morning jumps into the sea, climbing the mast, teamwork with the other schools on the ship, visits to the islands to hike and explore.

Huge thanks to the Spirit of Adventure Trust who sponsored the trip for our students, to Mrs Morgan who did all the organising, Whaea Renata who went on the trip, and to Mr Kumar who travelled to Auckland to drive the group home.



Pasifica Pride

Our Amokura Tamawahine, Kaiata, has found herself very busy. She has travelled to New York to the 'Commission on the Status of Women 69 Forum' (pictured here) as a Pasifica Youth Delegate. Kaiata attended sessions about issues that affect women worldwide, and collaborated on a session where she served as a panel speaker. Kaiata says "It was a thrilling experience, and she was delighted to be able to represent Pacific women in New Zealand."

Ngā whakaaro o te Tumuaki

Tēnā koutou katoa,

As we move through Term 1, it has been energising to see our students involved in so many aspects of life at our kura—on the stage, on the field or court, in workshops, and most importantly, in their learning. Our value of *kia whakauru* – *participation* has truly been on display, from the Spirit of Adventure trip and Cultural Night, athletics, engineering and coding workshops, and our House Fun Day encouraging whanaungatanga within our kura.



Behind all of this is a lot of hard work—from our ākonga, kaiako, and you, our whānau. Whether it's preparing for an assessment, performing in front of others, or supporting someone to take that brave step forward, we've seen consistent effort across the board. These efforts build the foundations for success—not just in assessments, but in growing confidence, skills, and strong connections.

A big thank you to all the whānau who came to Hui Whāinga earlier this term. Working together to set goals helps our students know what they're aiming for and why it matters. When whānau, ākonga, and kaiako work as a team, our students do better. This is how we grow good people for a changing world—*e tipu e rea, ka tipu koe hei tangata*.

We also want to give a warm welcome—and farewell—to our international students who joined us and are leaving this term. It's been wonderful having you as part of our kura—you've brought fresh perspectives, culture, and great energy into our classrooms and school life. It's been really special to see the friendships formed and the experiences shared. You've made your mark on the Tamatea whānau, and we wish you all the best for what comes next.

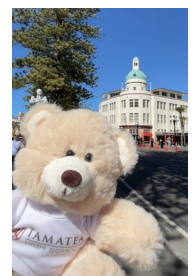
As we near the end of the term, I want to encourage every whānau to kōrero with their tamariki about finishing strong. The work they put in now sets the tone for the rest of the year. Whether it's submitting that last piece of mahi, turning up to class every day, or stepping into new opportunities—these actions matter. Putting in the effort now builds momentum. Working consistently leads to success and helps you step into your full potential.

As Term 1 wraps up, we hope everyone enjoys a well-earned break. Take time to rest, recharge, and enjoy whānau. We're looking forward to Term 2—new learning, new opportunities, and continuing to grow together as a kura.

Matua Jesse

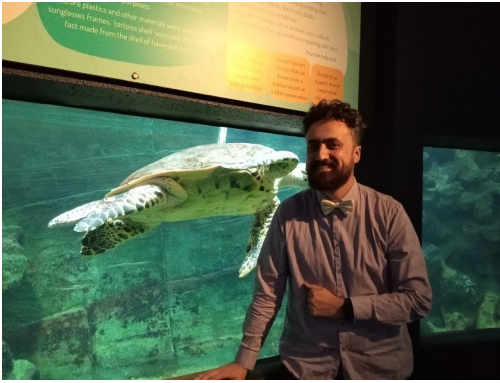


We're thrilled to announce the launch of our brand-new Instagram page dedicated to showcasing the vibrant and diverse lives of our international student community! Follow us at [@tamatea_international](https://www.instagram.com/tamatea_international) to get a closer look at school life from the perspective of our international students. From fun events, cultural celebrations, to the unique experiences of studying abroad – this page will feature everything that makes our school life special and multicultural.



Please check the Skool loop app, Facebook page or our website for up to date notices www.tamatea.school.nz

Year 11 Science trip to the National Aquarium



TAMATEA HIGH SCHOOL
CULTURAL EVENING
4TH OF APRIL 2025
5PM TO 7PM

AN EVENING CELEBRATING THE DIVERSITY OF OUR KURA

FREE ENTRY

CULTURAL PERFORMANCES

ENTERTAINMENT FROM THE COLLEGE BAND/STAFF

DELICIOUS CULTURAL FOOD FOR SALE (PLEASE BRING CASH) - INCLUDING HANGI, ISLAND PLATTER, INDIAN FOOD, THAI, SUSHI, FILIPINO

Tamatea High School 50th Reunion Celebrations

How many of you remember these events from the school? Look out for more information coming up soon about the reunion taking place during Labour weekend.



History of



School Logo



Mr J Ryan, first Principal of Tamatea High School submitted this article for the 2002 Magazine

Tamatea High School was established in 1975, the Principal Mr John Ryan being appointed August 1974. In informal discussions with the then Secretary of Napier High Schools' Board of Governors, Tom Johnson, the motto of the school - "We Care" was determined. It was an adaptation of the theme of the International Year of the Child "I Care."



No formal emblem was decided upon for some time. During 1975 staff members submitted a number of ideas, out of which the basic circle surrounded by the square became permanent. Various inclusions were incorporated into this - the motto on its own, intertwining strands with or without the motto (shown in the 1975 Magazine).

Mrs Sue McMullan held a position at the school in 1975. She also established a designing business. She was asked to submit designs for the school emblem and the present design was the one chosen from several examples. Mrs McMullan graciously gave this design to the school for its use.

Comments

- 1) Various interpretations have been put on the central design in the emblem. I have always favoured the idea of fronds unfolding, indicating new beginnings. Education is forever reviewing people, awakening them to new opportunities and challenges. Like Tamatea and his family, it can take us to new destinations, new horizons. The school from its inception has embraced new ideas and concepts, new ways of looking at and doing things, new growth, new developments. The "Maoriness" of the symbol connects it to the name of the school and the origins of the district and its people. Tamatea has associations throughout New Zealand, certainly as far north as the Waikato and Bay of Plenty and into the Wairarapa, as well as in Oamaru and Timaru and other parts of the South Island (see also Magazine 1982).
- 2) I have often thought the Maori "translation" of the motto could be/should be included with the English "ME MANAAKI TATOU".
- 3) If the emblem was considered in heraldic terms, it is incomplete, since it has no crown or crest. Perhaps the addition might be made one day!

EDITORIAL

INSCRIPTION TO THE WALL OF A PYRAMID

Based on the theory that 'One good picture contains an ocean of meaning', dis-should find in attempting to depths of this graphic record of High School in

Visually, the structure(s) to be school grounds three pyramids by our resident (Graeme Lister) Coal Corp.

Much like our will stand in dour because built with beauty eyes of students ing at bland en- they provide a re- from normality.

Every day, groups from seen either ob- at the base of, or heights of a pyramid.



Note: The pyramids were officially opened by the Mayor of Napier and Mrs Liz Skiffington (Marketing Manager for Coalcorp). The pyramids contain a time capsule to be opened in February 2025 on the school's fiftieth anniversary.

most important built on the this year were devised and built Art Teacher and financed by

auditorium they timeless splen- they have been in mind. To the wearied with gaz- vironments, freshing rest

representative school can be serving; sitting scaling the

That the school's decision makers allowed for these innovative structures to be built as compared to any number of functional but visually sterile alternatives is a positive reflection on the well balanced progressive direction in which the school is moving.



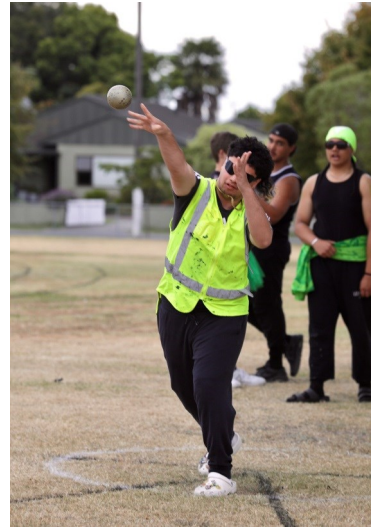
Capsule for 2025

Last week Tamatea High School pupils implanted a time capsule in their new "pyramid"-dominated recreation area.

Pictured recently (at left) sorting out what items should go into the capsule are — from left— Sarah Quate, head of the school's art department Graeme Lister and Karla Lewis.

Old examination papers, tapes and artwork were included in the capsule which will be opened during the school's 50th jubilee in 2025.

Their recreation area, made possible through a \$4000 Coal Corporation grant, incorporates three pyramids which echo existing structures and semi-circular slightly tilted areas of grass.

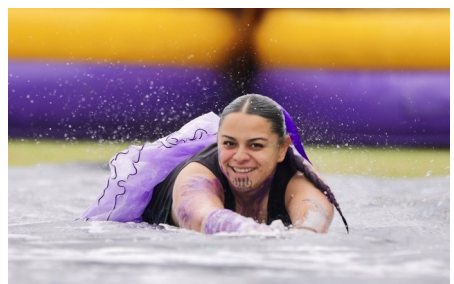


Athletics Day—House colours, lots of participation and a new record was set by Oakleigh for Shotput. Five students then went on to compete at the East Coast North Island Championships, representing us in Shotput, Discus and High Jump.



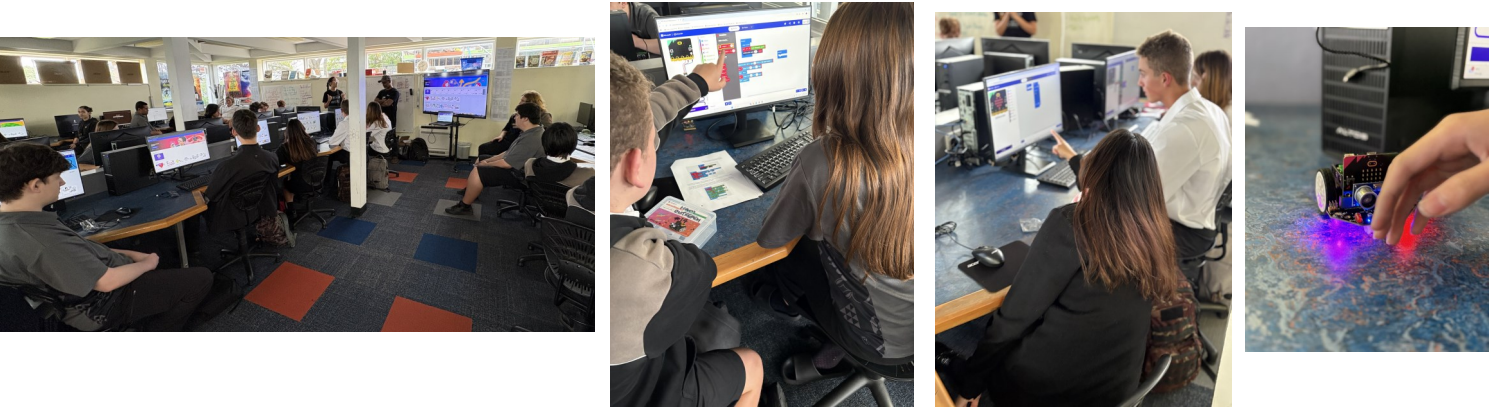


Fun Sports Day—
House colours,
some cool
activities and rain!



STEM Roadshow

Our Science and Digital Technology students each took part in a workshop facilitated by members of the Waikato University STEM roadshow. The photographs below show the Digital workshop which was all about Computer Science and Software Engineering. Our students were all super engaged as they were able to take part in some hands-on activities.



House Volleyball Competitions



Year 11 Art trip to Mataruahou/Bluff Hill in Napier



Dairy and Beyond

A group of Year 10 students recently had the opportunity to take part in ‘Dairy and Beyond’, a day out in Central Hawke’s Bay on a working farm. The activities included farm transport, milking, animal health, farm machinery and saving for their goals.

Tumuaki (Principal) Jesse Te Weehi Jesset@tamatea.school.nz	Tumuaki Tuarua (Deputy Principal) Whaea Kat McNicoll katm@tamatea.school.nz	Tumuaki Tuarua (Assistant Principal) Whaea Josie Burdon Josie b@tamatea.school.nz	Tumuaki Tuarua (Assistant Principal) Ms Meredith Ellingham meredithe@tamatea.school.nz
BOT CHAIRPERSON Ms Rewa Dawson	International Dean Ms Meredith Ellingham meredithe@tamatea.school.nz	Kauri Dean Whaea Cheryl Pohlen cheryl@tamatea.school.nz	
Miro Dean Matua Devon Turi devont@tamatea.school.nz	Rata Dean Whaea Renata Lander renatal@tamatea.school.nz	Tawa Dean Whaea Emma Neale emman@tamatea.school.nz	
Careers Advisor Mrs Cindy Morgan careers@tamatea.school.nz	Business Manager Mrs Vicky Bowie accounts@tamatea.school.nz	Principal’s PA/BOT Secretary Mrs Hayley Hodson enquiries@tamatea.school.nz	
Board of Trustees (BOT) Rewa Dawson (Chair), Aroha Cooper, Misbah Abdulla (student rep), Charla Hawaikirangi, Taiatini Lepaio, Marion Loughran (staff rep), Allan Poy			